

Motion detector

IS 240 DUO

white

EAN 4007841 602819

Article number 602819



infrared sensor
240°



max. 12 m

1000 W

1000 W max.



IP54



160° horizontal



2 - 2000 lux



10 sec - 15 min



Ideal 2 m



energy saving

3 years

manufacturer's
warranty steinel.de/
garantie

Function description

Round the corner. Infrared wall sensor IS 240 DUO, for indoors and out, 240° angle of coverage, reach up to 12 m, selectable time and twilight threshold, detection zone can be customised with shrouds.

Technical specifications

Dimensions (L x W x H)	100 x 60 x 90 mm
Manufacturer's Warranty	3 years
Settings via	Potentiometers
With remote control	No
Version	white
PU1, EAN	4007841602819
Type	Motion detectors
Application, place	Indoors, Outdoors
Application, room	outdoors, front door, all round the building, terrace / balcony, courtyard & driveway
Colour	white
Colour, RAL	9010
Includes corner wall mount	Yes
Installation site	wall, corner
Installation	Surface wiring, Wall, corner
IP-rating	IP54
Protection class	II

LED lamps > 2 W < 8 W	175 W
LED lamps > 8 W	350 W
Capacitive load in µF	132 µF
Technology, sensors	passive infrared, Light sensor
Mounting height	1,80 – 4,00 m
Mounting height max.	4,00 m
Optimum mounting height	2 m
Detection angle	240 °
Angle of aperture	180 °
Sneak-by guard	Yes
Capability of masking out individual segments	Yes
Electronic scalability	No
Mechanical scalability	No
Reach, radial	r = 5 m (52 m ²)
Reach, tangential	r = 12 m (302 m ²)
Switching zones	276 switching zones
Twilight setting	2 – 2000 lx

<https://www.steinel.de>

Subject to technical modifications

04.2025 Page 1 from 3

Motion detector

IS 240 DUO

white

EAN 4007841 602819

Article number 602819



Technical specifications

Ambient temperature	from -20 up to 50 °C	Time setting	10 s – 15 Min.
Material	Plastic	Basic light level function	No
Mains power supply	230 V / 50 Hz	Main light adjustable	No
Switching output 1, resistive	1000 W	Twilight setting TEACH	No
Fluorescent lamps, electronic ballast	350 W	Constant-lighting control	No
Fluorescent lamps, uncorrected	500 VA	Interconnection	Yes
Fluorescent lamps, series-corrected	500 VA	Type of interconnection	Master/master
Fluorescent lamps, parallel-corrected	5000 VA	Interconnection via	Cable
Switching output 1, low-voltage halogen lamps	1000 VA	Product category	Motion detector
LED lamps < 2 W	100 W		

Accessories

EAN 4007841 630218

Corner wall mount 01

Motion detector

IS 240 DUO

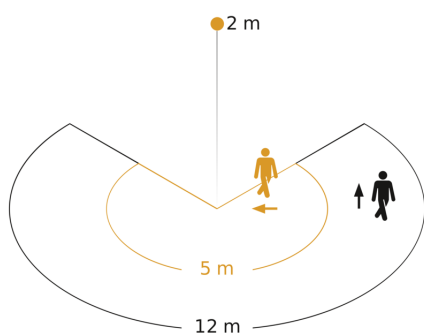
white

EAN 4007841 602819

Article number 602819



Detection Zone

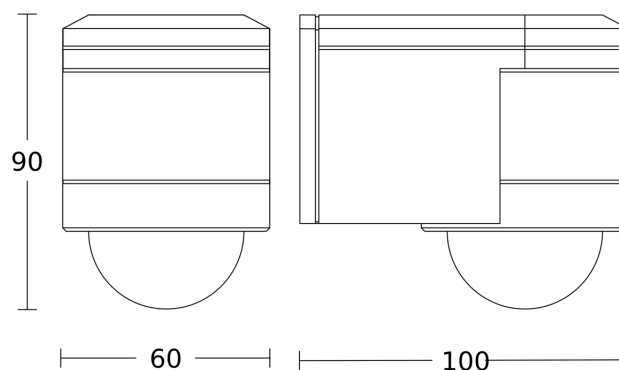


Possible mounting height: 1,80 m – 4,00 m

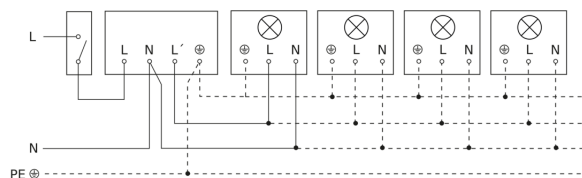
Orange: radial

Black: tangential

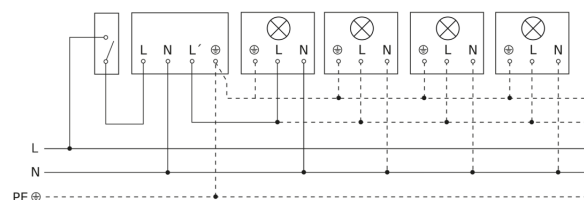
Dimension Drawing



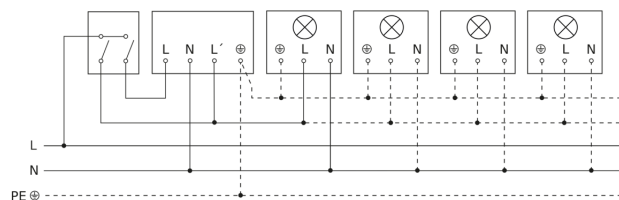
Light without neutral conductor



Light with neutral conductor



Connection using two-circuit switch for manual and automatic operation



Circuit diagram Connection via a changeover switch for continuous and automatic operation

